

# Cadmould Cool

Better cooling system! • Shortest cycle time! • More profit!

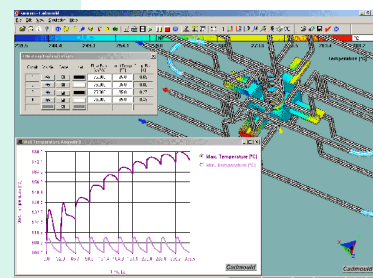
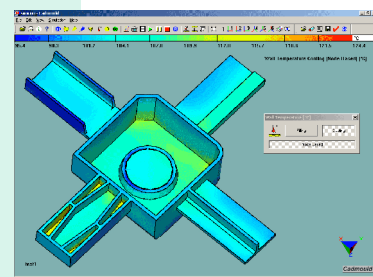
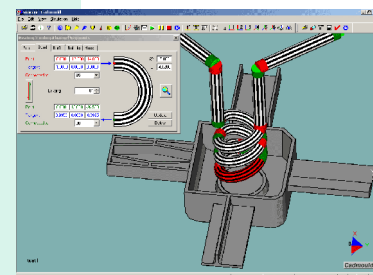
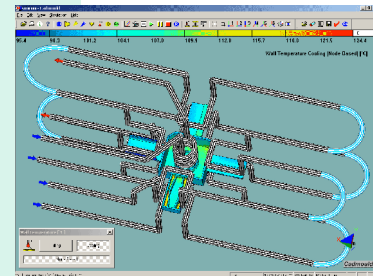
Optimized cooling system • Shortest cycle time • Less warpage

## Functions:

- CAD independent modelling of cooling channels
- calculation of the temperature distribution separated in filling and cooling phase
- calculation of the mean cooling agent temperatures
- interface to filling phase simulation and warpage module
- steady state and transient calculation

## Results:

- Wall temperatures (hot spots)
- Differences of the cooling agent temperatures (in-out) per cooling channel
- Diagram of the temperatures over cycles



simcon kunststofftechnische Software GmbH  
Technologie Park Herzogenrath  
Kaiserstr. 100  
D - 52134 Herzogenrath

fon: +49 (0) 2 407 908 58 0  
fax: +49 (0) 2 407 908 58 58